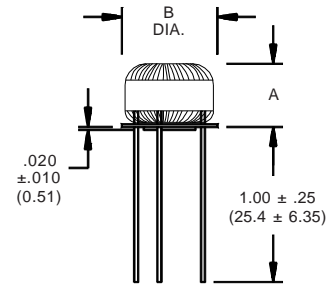


MINIATURIZED COMMERCIAL POWER INDUCTORS

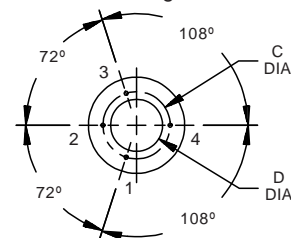
- Ideally suited as switching regulator and coupled inductors, common mode chokes, or in other power filtering applications.
- The temperature rise is less than 30 °C when measured at an ambient temperature of 100 °C, 0.1 Vrms, 10 kHz, and at rated DC current as shown in the Tables below.
- A large number of sizes allows a selection for optimum performance per unit volume.
- Commercial open construction, conformal coated version of standard PK356 series.

PART NUMBER	INDUCTANCE @ 0 DC (mH†)	DC CURRENT (Amps.)	DCR (Ω)	SIZE
PKC-2	20.0	0.100	29.0	2
PKC-3	20.0	0.140	20.0	3
PKC-4	20.0	0.220	12.4	4
PKC-5	20.0	0.290	10.2	5
PKC-7	15.0	0.120	22.0	2
PKC-8	15.0	0.160	15.0	3
PKC-9	15.0	0.250	9.3	4
PKC-10	15.0	0.330	7.7	5
PKC-12	10.0	0.140	14.6	2
PKC-13	10.0	0.200	10.0	3
PKC-14	10.0	0.310	6.2	4
PKC-15	10.0	0.400	5.1	5
PKC-16	7.5	0.100	20.3	1
PKC-17	7.5	0.170	11.0	2
PKC-18	7.5	0.240	7.5	3
PKC-19	7.5	0.380	4.7	4
PKC-20	7.5	0.490	3.8	5
PKC-21	5.0	0.120	13.5	1
PKC-22	5.0	0.210	7.3	2
PKC-23	5.0	0.300	5.0	3
PKC-24	5.0	0.470	3.1	4
PKC-25	5.0	0.600	2.6	5
PKC-26	3.0	0.160	8.1	1
PKC-27	3.0	0.270	4.4	2
PKC-28	3.0	0.380	3.0	3
PKC-29	3.0	0.600	1.9	4
PKC-30	3.0	0.780	1.5	5
PKC-31	2.0	0.190	5.4	1
PKC-32	2.0	0.330	2.9	2
PKC-33	2.0	0.470	2.0	3
PKC-34	2.0	0.740	1.3	4
PKC-35	2.0	0.950	1.0	5

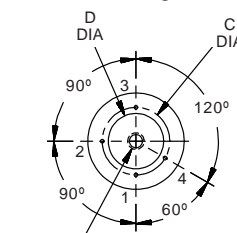
PART NUMBER	INDUCTANCE @ 0 DC (mH†)	DC CURRENT (Amps.)	DCR (Ω)	SIZE
PKC-36	1.00	0.270	2.70	1
PKC-37	1.00	0.470	1.50	2
PKC-38	1.00	0.660	1.00	3
PKC-39	1.00	1.000	0.62	4
PKC-40	1.00	1.300	0.50	5
PKC-41	0.75	0.310	2.00	1
PKC-42	0.75	0.540	1.00	2
PKC-43	0.75	0.760	0.75	3
PKC-44	0.75	1.200	0.47	4
PKC-45	0.75	1.600	0.38	5
PKC-46	0.50	0.380	1.30	1
PKC-47	0.50	0.660	0.66	2
PKC-48	0.50	0.930	0.50	3
PKC-49	0.50	1.470	0.31	4
PKC-50	0.50	1.900	0.25	5
PKC-51	0.25	0.530	0.66	1
PKC-52	0.25	0.930	0.33	2
PKC-53	0.25	1.300	0.25	3
PKC-54	0.25	2.080	0.16	4
PKC-55	0.25	2.700	0.13	5
PKC-56	0.10	0.780	0.30	1
PKC-57	0.10	1.350	0.17	2
PKC-58	0.10	1.950	0.11	3
PKC-59	0.10	3.080	0.07	4
PKC-60	0.10	3.880	0.06	5
PKC-61	0.04	1.180	0.14	1
PKC-62	0.04	2.030	0.07	2
PKC-63	0.04	2.680	0.06	3



Terminal Configuration A



Terminal Configuration B



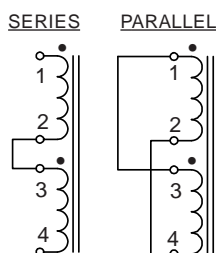
Size 4 has no hole, only size 5 has a through hole of .120 minimum.

† Inductance is measured at 0.1 Vrms and 10kHz. The inductance is at least 80% of the table value when measured with rated dc current.

All inductors have split windings for versatility. They can be connected in series, parallel or individually for balanced filtering applications.

The ratings in the above tables are for a series-aided connection of both windings. The inductance of a parallel connection of these windings will result in 25% of the inductance at twice the rated current. The DCR will be 25% of the series connection.

Example: Parallel connection of PKC-2 will have 5 mh at .20 Amp DC with a DCR of 7.25 ohms.



SIZE	A (MAX.)	B (MAX.)	C (±.010)	D (±.010)	TERMINAL CONFIG.	LEAD DIA.
1	0.280 (7.11)	0.410 (10.41)	0.260 (6.60)	0.160 (4.06)	A	0.012 (0.31)
2	0.340 (8.63)	0.500 (12.70)	0.350 (8.89)	0.250 (6.35)	A	0.012 (0.31)
3	0.415 (10.54)	0.630 (16.00)	0.440 (11.17)	0.340 (8.64)	A	0.016 (0.41)
4	0.500 (12.70)	0.850 (20.32)	0.560 (14.22)	0.460 (11.68)	B	0.016 (0.41)
5	0.635 (16.12)	0.950 (24.13)	0.670 (17.00)	0.570 (14.48)	B	0.020 (0.51)



620 N LINDENWOOD OLATHE, KANSAS 66062
 Phone: (913) 747-6111 or (800) 246-5650
 Fax: (913) 747-6110 www.torotelproducts.com